



GREENVILLE  
GARDENS



WORLD CLASS APARTMENTS

## CREATING A LIVING EXPERIENCE BEYOND EXPECTATIONS

Two twin towers standing 12 storeys above Nairobi's high-profile suburb in the picturesque parts of General Mathenge is the exceptional Greenville Gardens, nestled within a serene mew of quiet palatial residences.

This beguiling charm of intricately designed spaces offers a modern and pristine living experience of 2, 3, and 4-bedroom apartments specially built with a unique series of outside spaces revealing enviable elite residences.







AN OASIS OF CALMNESS

2, 3 & 4 BEDROOM SUPER MODERN APARTMENTS IN UPSCALE NAIROBI



AN OASIS OF CALMNESS

## A GLIMPSE OF JET-SET LIVING

With immense attention to detail and a fine blend of impeccable architecture, the development constitutes a perfect layout comprising of coveted floor to ceiling windows that fills every inch of the room with natural light. The contemporary fully fitted kitchen features a range of integrated appliances and marble countertops complementing the home's décor that seamlessly combines functionality and effortless elegance.



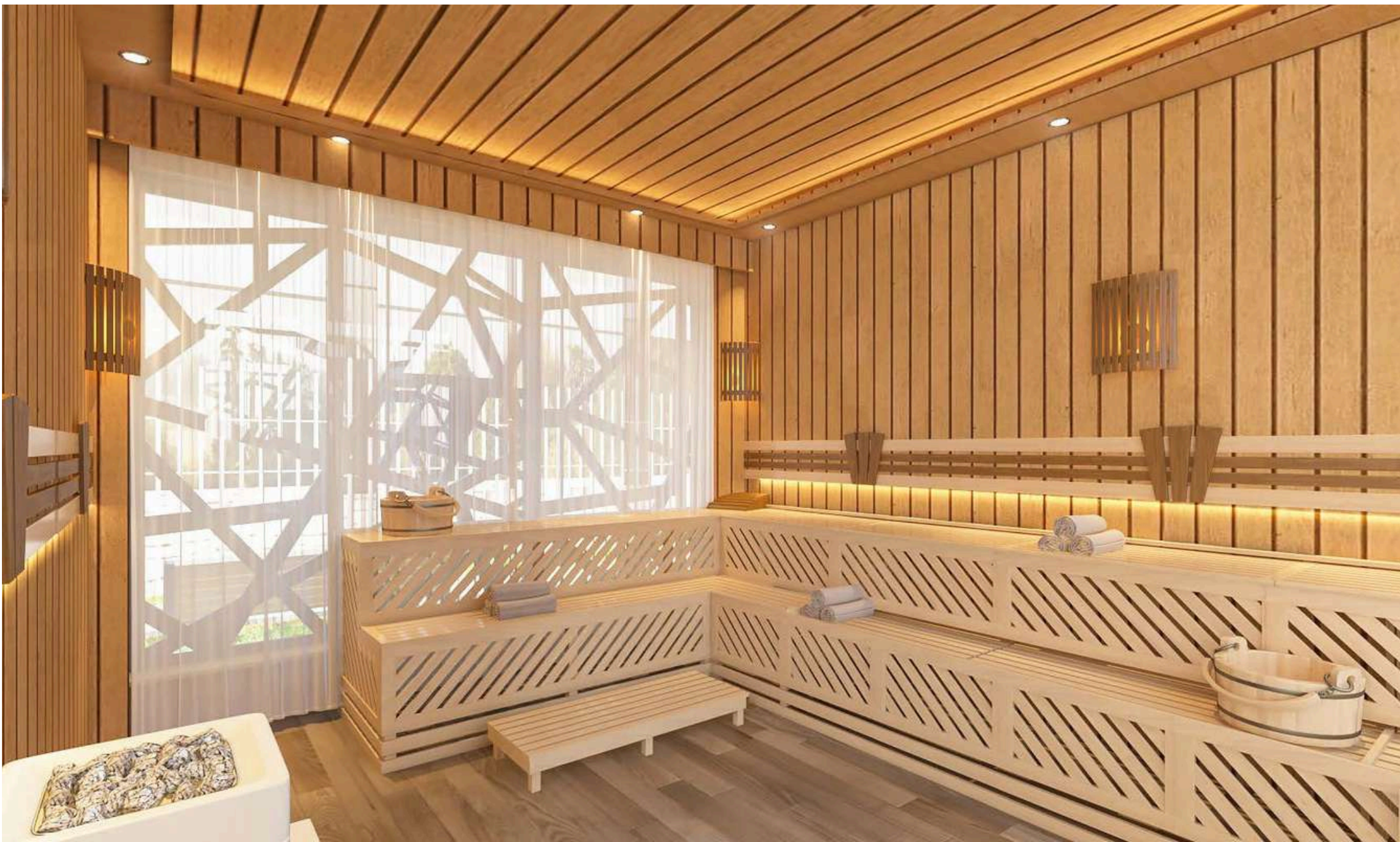


WORLD CLASS INTERIOR

## GETTING READY IS THE BEST PART OF THE DAY

The lavished en-suite bedrooms are the epitome of warmth, providing an enriched living experience with maximized space, built-in wardrobes and an ambience of high-end finishes forming the perfect resting place.

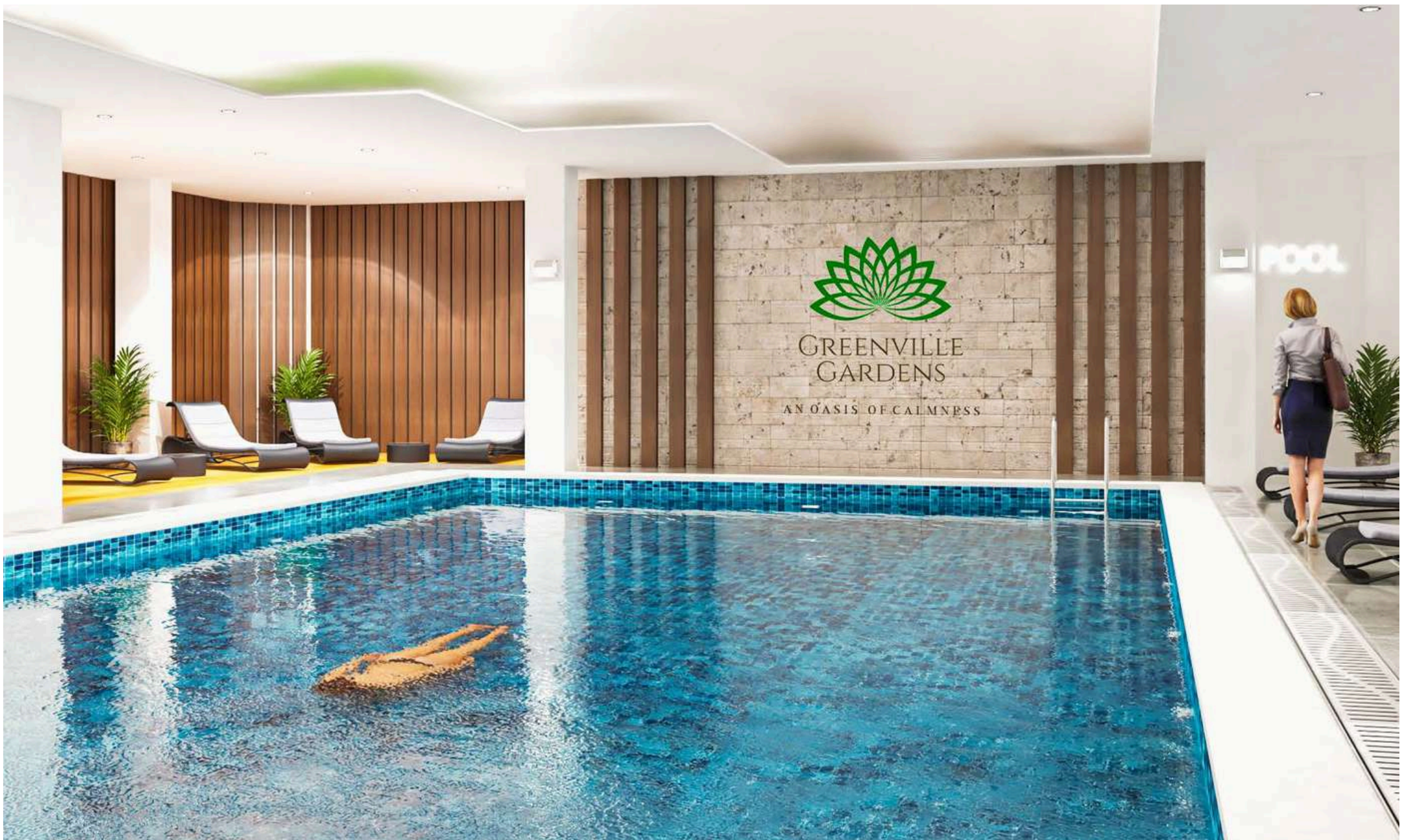
If you appreciate a nice atmosphere of bubble baths and cozy treatments, then the marble bathroom with elegant fixtures brings out a serene space that inspires calm and comfort.



## AN OASIS OF SPA LEVEL RELAXATION

---

Amongst the most stunning details of Greenville Gardens that has it labelled as the Pinnacle of Luxury are the well- served and one-of-a-kind features that include a functional steam room and sauna, heated swimming pool and a fully fitted world-class gym with state-of-the-art equipment that assures the residents of an unparalleled opulent lifestyle.



AN OASIS OF CALMNESS



AN OASIS OF CALMNESS





WORLD CLASS INTERIOR

## OUTDOOR FEATURES

- Electric Vehicle Charging Port
- Heated Swimming pool
- Steam room
- Club House
- Multiple Balconies
- Water Feature
- Landscaped Gardens
- Children's Playground
- Electric Fence
- External Lighting
- Walking /Jogging Track
- Standby generator
- Electronic main gate.
- Intelligent systems

## INDOOR FEATURES:

- Alarm System
- Intercom
- Ensuite
- Built-in wardrobes
- Internet Access
- High speed lifts

## ECO FEATURES

- Solar panel
- Borehole
- Electronic Car Charging Station



FLOOR PLAN

# 2 BEDROOM



FLOOR PLAN

# 3 BEDROOM



FLOOR PLAN

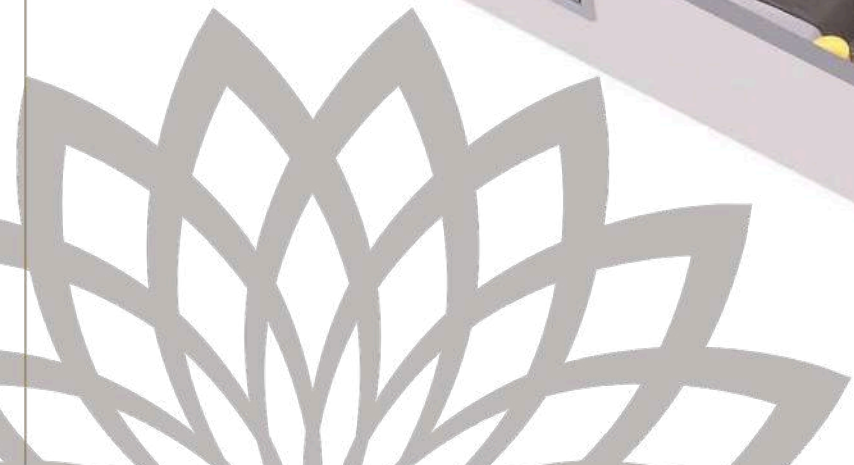
# 3 BEDROOM + DSQ



FLOOR PLAN

# 4 BEDROOM + DSQ

DUPLEX (LOWER LEVEL)



FLOOR PLAN

# 4 BEDROOM + DSQ

DUPLEX (UPPER LEVEL)





## UNIQUE DWELLINGS FOR PROFESSIONALS & FAMILIES

---

Located in Nairobi's most vibrant highly sought-out avenues, residents shall enjoy close proximity to mega shopping malls that are just a walking distance such as Westgate & Sarit Your City, experience five-star dining, exclusive entertainment joints and a closeness to excellent healthcare being Aga Khan University Hospital.



Harmony Center

Eyeris, The Optometrists

dhirens salon

Asmara Restaurant Westlands

General Mathenge Rd

La Casa Apartments

General Mathenge Rd

Best Chance Magazine

Fortress of Solitude

Honeywood Apartment

Tricias Hair Salon



Casabella

Palms

Golden Palm Gardens, General Mathenge

General Mathenge Gardens

Ziziafrique Office

Westside Towers

Vivo Smartphones

Lower Kabete Rd

Spring Valley Gardens

Lower Kabete Rd

Alpha Developers

Mwanzi Rd

Mwanzi Rd

Sikh Temple

Westgate Shopping mall

GE Healthcare Kenya

Brookside Dr

Mwanzi Rd



  
GREENVILLE  
GARDENS

DEVELOPER  
 **PRIMOFORT**  
INVESTMENT

YPM towers, 2<sup>nd</sup> Floo, Mogotio Rd,r, Westlands  
+254 724 708 029 / +254 797 551 155  
info@primofort.co.ke